

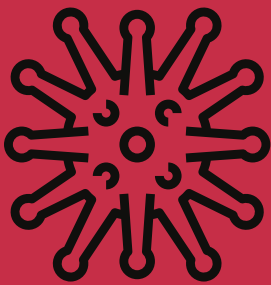
# FLU

VERSUS

# COVID-19

COMPARING THE TWO TYPES OF VIRUSES

## INFLUENZA



Symptoms:  
Fever  
Cough  
Body aches  
Sometimes vomiting and diarrhea  
Can result in pneumonia  
Can be mild to severe; or even fatal

Symptoms can appear in as little as one day after exposure

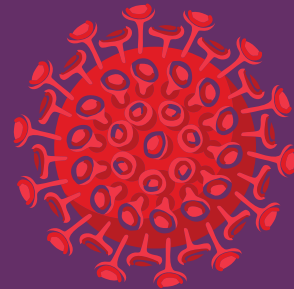
Oral antiviral medications can address symptoms and sometimes shorten the duration of the illness. Because they are given by mouth, these antiviral therapies can be prescribed for patients who are not hospitalized, as well as for those in the hospital.

A vaccine is available and effective in preventing some of the most dangerous types of the flu to reduce the severity or duration of the flu.\*

In the 2019-2020 flu season Wisconsin had 36,175 cases of flu.

All cases of flu are reported to the state and not tracked at a local level.

## COVID-19



Symptoms:  
Fever  
Cough  
Body aches  
Sometimes vomiting and diarrhea  
Can result in pneumonia  
Can be mild to severe; or even fatal  
Loss of smell and taste  
Shortness of breath

Symptoms can take up to 14 days to appear after exposure

Antiviral medications and other therapies are being tested to see if they can effectively address symptoms and shorten the duration of the illness. Currently, effective treatments are only available in an intravenous form, so they are not prescribed to patients outside of a hospital setting.

No vaccine is available at this time, though development and testing are in progress.

To date Wisconsin has had over 166,000 positive COVID-19 cases

Jefferson County has had over 2000 positive COVID-19 cases.